



# Jackson Maunders

3 Bedroom Semi-Detached for Rent - **£1,750 per month**

Woodhouse Lane East, Timperley, WA15 6AN



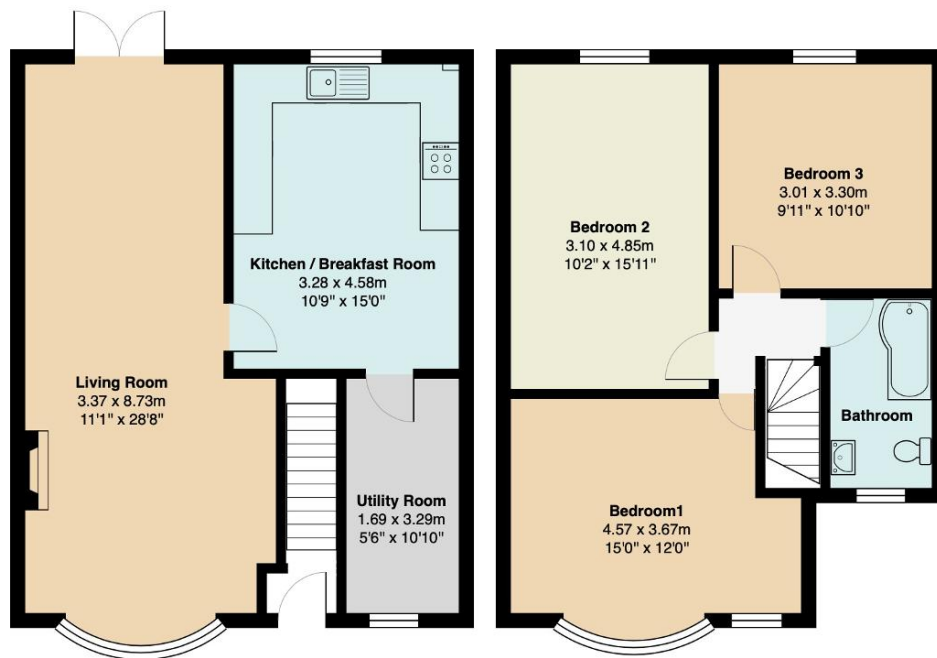
## KEY FEATURES

- Three Double Bedrooms • Lounge/Dining Room • Modern Kitchen/Breakfast Room • Utility Room • Modern Family Bathroom • Off Road Parking • Large Rear Garden • Long Term Rental

## Description

An extended three double bedroom semi detached family home which has just undergone a comprehensive refurbishment program located close to Heyes Lane Primary School and local amenities. The accommodation comprises three double bedrooms, family bathroom, kitchen/breakfast room, utility room and a lounge/dining room with log burner. Externally there is off road parking to the front and a large private garden to the rear. Viewings are a must!





Total Area: 111.0 m<sup>2</sup> ... 1195 ft<sup>2</sup>

All measurements are approximate and for display purposes only