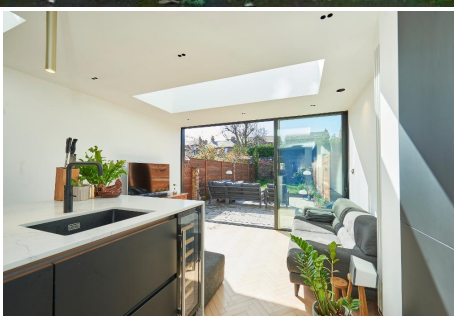




Jackson Maunders

3 Bedroom Terraced for Sale - Guide Price £784,000

Elm Road, Hale, Altrincham, Cheshire, WA15 9QP



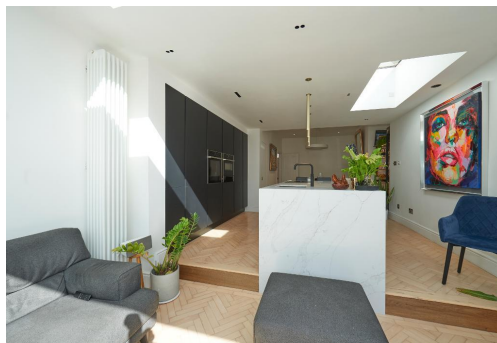
Description

Situated on one of the most popular locations on the tree roads with a superb south facing aspect to the rear, this Victorian double height bay fronted house has been beautifully extended and updated yet retaining many original features which offers a highly convenient location together with stylishly presented accommodation spread over three floors plus cellars.

Briefly the accommodation comprises a good sized entrance hall, lounge with original working fireplace, dining room, superbly extended breakfast/kitchen by Kutchenhaus with Neff appliances and 20mm slim frame sliding doors overlooking the rear garden, whilst at lower ground floor level is a useful and easily convertible cellar. At first floor level there are two double bedrooms and a re-fitted family bathroom with underfloor heating. The top floor completes the house with a fabulous loft conversion with bedroom and en-suite facilities.

Externally to the rear there is a beautifully landscaped and well-proportioned southerly facing rear landscaped garden, these houses particularly benefit from backing onto the houses on Hale Road which have large South facing rear gardens which gives a feeling of openness.

The house is presented to a light, tasteful, contemporary theme and is truly presented in walk-in condition. Elm Road is characterised by a mixture of three and four bedroomed bay fronted terraced houses all set within walking distance of Hale and Altrincham. Hale's fashionable village with its range of restaurants and shops is complemented by Altrincham's market town and vibrant centre with Metrolink services into Manchester. The



Total Area: 184.7 m² ... 1988 ft²
All measurements are approximate and for display purposes only