



# Jackson Maunders

4 Bedroom Semi-Detached for Sale - **Offers in Excess of £600,000**

Prospect Drive, Hale Barns, WA15 8TQ



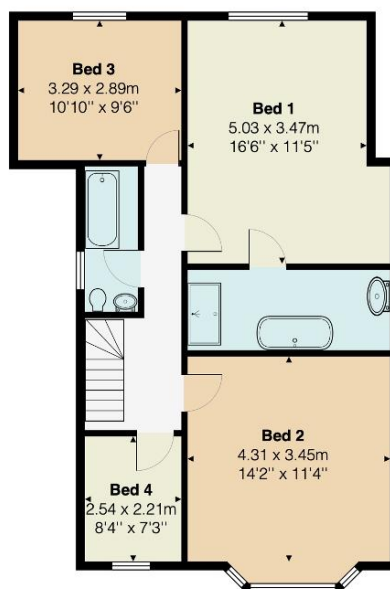
## Description

A superb family home located at the head of a cul-de-sac which has been remodelled, updated and extended which now offers accommodation close to 1600sq ft.

The accommodation comprises large entrance hallway, ground floor cloaks/WC, family room with bay window, large lounge with feature fireplace and double doors giving direct garden access to the rear garden, large open plan kitchen/dining room/sitting room with an extensive range of shaker style cabinetry and granite worksurfaces and part vaulted ceilings with direct garden access.

To the first floor there are three generous sized double bedrooms and a further single bedroom. The master bedroom with en-suite bath/shower room and a separate family bathroom.

Externally the property is approached via a paved driveway offering off road parking to the front whilst to the rear is a Westerly facing garden, which is mainly laid to lawn with paved patio area and mature shrubbery, ideal for the Summer months.



Total Area: 146.2 m<sup>2</sup> ... 1574 ft<sup>2</sup>

All measurements are approximate and for display purposes only